

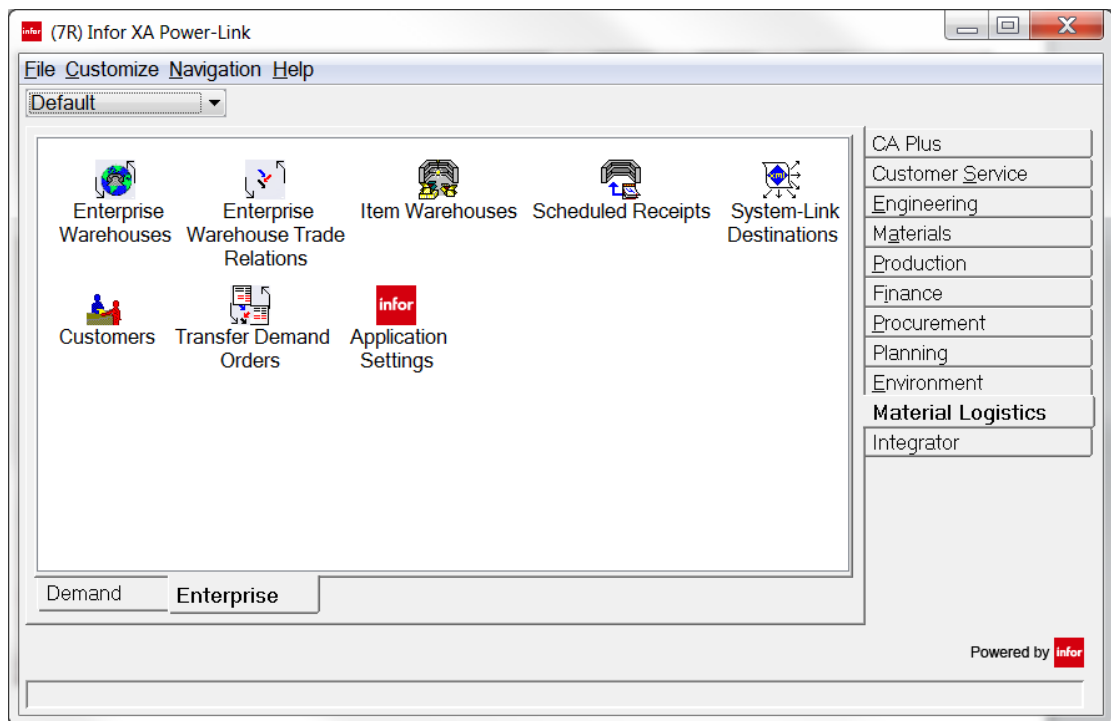


Material Logistics

Material Logistics

The needs of today's manufacturers and distributors are varied, but trends have emerged which show a need to better manage the supply chain. Increasingly, businesses are seeing the need to become geographically dispersed to better handle the demands of their customers. Multi-site and even multi-company enterprises have become the new norm.

Material Logistics (ML) allows your organization to better manage your supply chain, giving you visibility across the enterprise in an unprecedented fashion. ML is the Infor Development Framework (IDF) replacement application for InterSite Logistics (ISL) and Multi Environment InterSite Logistics (MISL). Now with additional enhanced capabilities, the advantage is two-fold: 1.) Ease of setup and 2.) Ability to leverage all the Power-Link features and functionality. A very convenient and non-intrusive migration path has been developed to allow any company to go from the traditional host applications to the IDF. With ML you now have visibility of orders, transfers, replenishments and shipments and can account for inventory in transit, at outside processing, consignments and even vendor managed inventory (VMI)!



Material Logistics features and functions:

- The creation and maintenance of Transfer orders within and across environments from ML, OBPM or MRP
- Multiple items and releases per Transfer order
- Shipping of the Customer order that is associated with the Transfer order from CSM/COM
- Use of IDF view, subset, sort, search, etc. tools
- Receiving of the scheduled receipt that is associated with the Transfer order within Materials Management
- The ability to designate demand or supply owned inventory when an order is shipped
- The ability to designate whether or not the customer order, when shipped, is allowed to be invoiced
- The ability to pass Transfer order demand from one warehouse to another
- Accounts payable invoice (API) processing for those orders that are invoiced
- Deferred transfer order release

Material Logistics also includes the following fulfillment capabilities. It allows global organizations to process customer orders from centralized or distributed locations and fulfill orders based on the most efficient production/shipping location. This complex processing is made simple for organizations with multiple plants, warehouses, or even multiple Infor ERP XA environments. Now you can facilitate automatic order filling from the most efficient location based on customer location, product availability, etc. Automatic updates to invoicing for centralized customer orders based on the activities at the remote locations is also streamlined.

Material Logistics fulfillment features and functions:

- Automatically drop-ship from the most efficient plant warehouse or vendor warehouse based on customer location and available stock
- Check immediate item availability, and allocate, throughout all plants, warehouses, vendors and distribution centers from a central sales office
- Automatically update a central customer order with activities from remote locations for invoicing
- Accept offline orders and route to appropriate processing centers automatically
- Gain visibility across multiple companies on a single environment
- Facilitates 'real time' remote shipping transactions through COM/offline shipping
- Reports remote shipping to 'home' order for invoicing
- Update / Maintenance / Deletion of remote order, fully supported through the central order
- Multiple lines on central orders having 1 or many remote orders

Material Logistics required Infor XA modules:

Customer Order Management (COM)
Customer Service Management (CSM)
Enterprise Product Data Management (EPDM)
Inventory Management (IM)
Material Requirements Planning (MRP)
Materials Management (MM)
System-Link (SYSL)

Contact your Infor Affiliate or Agility, Inc. for more information!



AGILITY, INC.
7000 Fitzwater Road, Suite 220
Brecksville, Ohio 44141
440.546.9290 Phone
440.546.9291 Fax
www.agility-inc.com
sales@agility-inc.com



Partner Network