



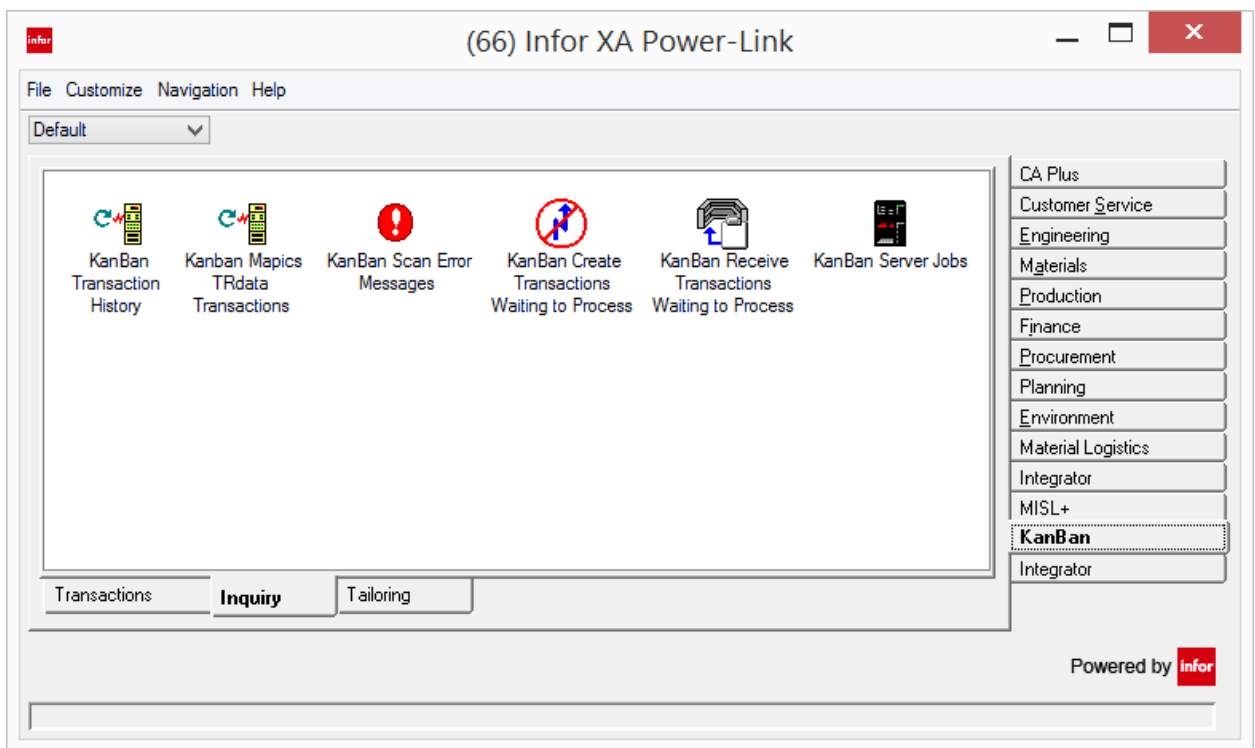
Electronic KanBan

Electronic KanBan

Lean Manufacturing, Just-in-time supply chain, Continuous flow, Kanban, Kaizen, and Value Stream Mapping, etc. are all terms that are more prevalent today than ever. Your manufacturing operation needs to continue to cut waste, costs and do more with less.

Electronic KanBan dramatically simplifies the process of implementing and maintaining a lean/visual execution system. It is a sophisticated bin calculation, management, and execution system which can streamline the process of generating an order for kanban items to a simple wand of a barcode. Just wand a bin and an order is created. A second wand receives and closes the order, generates the appropriate inventory transactions and can be tailored to backflush labor and materials! Electronic KanBan can also be tailored to automatically send an e-mail notification to key personnel and vendors when a kanban event occurs. The system can even be tailored to send an end-of-day cumulative demand notification to streamline communications.

If you are currently utilizing kanban techniques, Electronic KanBan can make your operation more efficient. Electronic KanBan is simple to use, easy to implement, and offers a quick return on investment. If you are not currently utilizing lean/visual techniques and need guidance, our team of manufacturing experts can help you implement the techniques that will work best in your unique environment!



Electronic KanBan features and functions:

- Automatically Releases:
 - Manufacturing Orders
 - Purchase Orders
 - Repetitive Orders
 - InterSite Orders
- Automatically calculates bin quantities to optimize efficiency
- Automatically creates appropriate inventory transactions
- Automatically generates e-mail notifications to vendors and key personnel

The Electronic KanBan system allows users to enter transactions, and automatically releases replenishment orders or internal transfers when an inventory bin or location is empty. The system also allows users to enter transactions to automatically receive the inventory, backflush labor and allocations, and print a request to transfer inventory. Electronic KanBan can be tailored at the environment and bin level.

Electronic KanBan Creates Four Transactions:

@E (Empty Bin):

Drives a new Manufacturing Order, InterSite Order, Repetitive Schedule, Purchase Order or Blanket Release

@F (Full Bin):

Takes the appropriate action of closing the oldest KANBAN order open for that item (key). Can be configured to backflush labor and/or allocations, perform a turn-in transaction and set order status ready for closeout

@T (Request Transfer):

Prints a bar-coded report that will prompt the transfer of inventory from stores or another location to the location of this KANBAN item (key). The purpose of this transaction is similar to the @E (Empty Bin), but instead re-supplies item from an internal source.

@X (Inventory Transfer):

When transferring inventory from store area, the @X will perform a TW transaction that will transfer inventory from one location to another

Electronic KANBAN Tailorable Options:

System level by environment:

- * Release Manufacturing Orders
- * Release Repetitive Orders
- * Backflush Allocations at Order Release or Close
- * E-mail notification to planners or others
- * Release Purchase Orders
- * Backflush Labor

Item level by environment/warehouse/item/workcenter/cardnumber:

- * Close Mfg./Rep. Schedules
- * Print shop packet
- * Bin quantity
- * Print shop packet
- * Create new P.O. or add Blanket Release
- * Backflush Labor
- * Backflush Allocations
- * Print Transfer Label
- * Print P.O.

Electronic Kanban required Infor XA modules:

Inventory Management (IM)
Production Control and Costing (PC&C)
Repetitive (REP)*
Material Logistics (ML)** or InterSite Logistics (ISL)**
Purchasing (PUR) ***

* Required for automatic release of Repetitive orders or schedules

** Required for automatic release of InterSite orders

*** Required for automatic release of Purchase orders or to add releases to a blanket P.O.

Developed using RPG IV and ILE RPG, it is maintained using the IBM Rational Developer for Power Systems toolset to insure the integration of latest features, and is available for i5.4, i6.1, i7.1, and i7.2 for your System i or Power System.

AGILITY, INC.

7000 Fitzwater Road, Suite 220
Brecksville, Ohio 44141
440.546.9290 Phone
440.546.9291 Fax

www.agility-inc.com
sales@agility-inc.com



Partner Network